

Product Specification

4G LTE ANTENNA

ANTMULTIPATCH



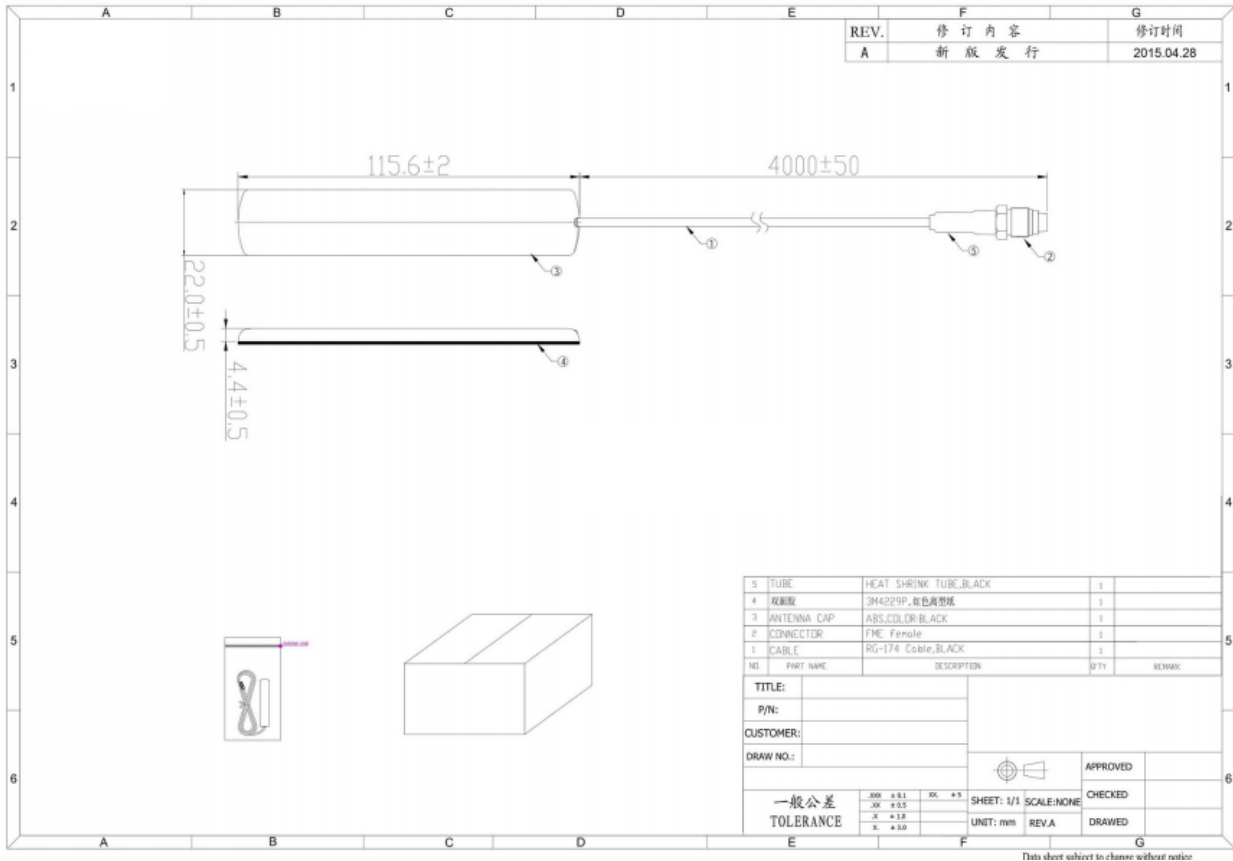
Overview

The ANTMULTIPATCH is a well-performing and compact patch antenna suited to cover the 4G LTE, 3G CDMA and 2G GSM/GPRS frequency bands.

Specifications

Electrical Specifications	
Frequency	700-2700MHz
Gain	2.0 dBi
VSWR	Less than 2.5:1
Connector	FME/F
Cable	RG-174
Impedance	50 Ω
Polarisation	Linear Vertical
Mechanical Specifications	
Mounting Mechanism	Adhesive
Height	115.6 mm
Width	22 mm
Depth	4.4 mm
Material	ABS
Temperature Rating	-40°C to +85°C

Dimensions



Figures

Radiation Pattern

